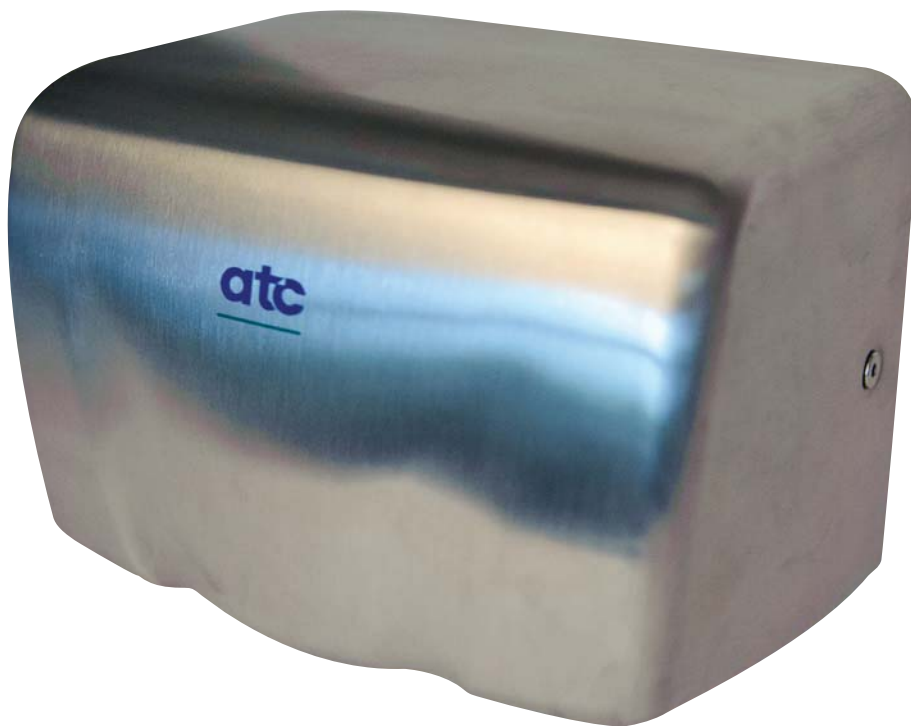




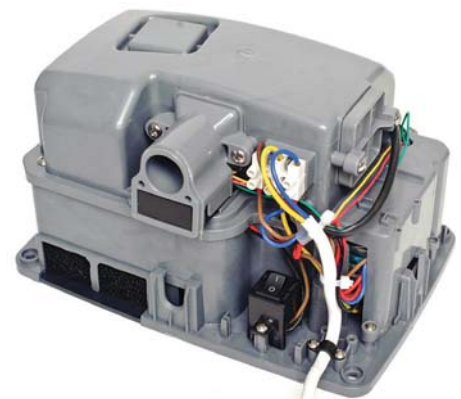
INTELLIGENT FACILITY SOLUTIONS  
Electric Works, 3 Concourse Way  
Sheffield, S1 2BJ, United Kingdom  
Phone UK: +44 (0) 114 354 0047  
Phone Eire: +353 190 36387  
sales@ihdryers.co.uk  
<https://www.intelligenthanddryers.com/>

# atc Puma High Speed Hand Dryer

**New Low Energy  
High Speed Hand Dryer  
As Low as 500 Watts**



Element On/Off



Under the Cover



# atc Puma High Speed Hand Dryer

The Smallest High Speed Hand Dryer in the World

as low  
as 500W

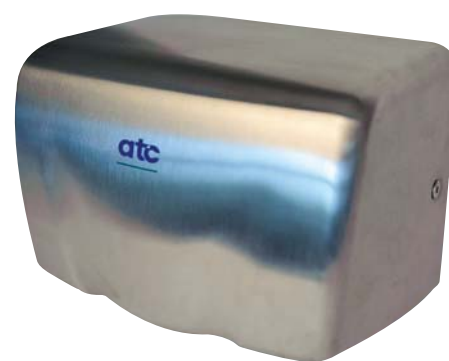
## DESCRIPTION

<b>Product Code</b>	Z-2000 M
<b>Cover Material</b>	Stainless Steel
<b>Finish</b>	Matt Stainless Steel
<b>Warranty</b>	2 Years
<b>Activation</b>	Automatic

This Hand Dryer is ideal for  
medium usage washrooms

## ELECTRICAL SPECIFICATIONS

<b>Voltage</b>	220 - 240Vac
<b>Frequency (Hz)</b>	50 / 60Hz
<b>Brush Motor with Dual Ball Bearings</b>	25000 rpm
<b>Power Output (adjustable)</b>	1150-500W
<b>Motor Power</b>	500W
<b>Heating Power (adjustable)</b>	650W / Off
<b>Sensor</b>	250mm Fixed
<b>Drying Time</b>	15 Seconds
<b>Air Flow m/s</b>	60m/s



<b>NOISE LEVEL</b>	70db at 1m
--------------------	------------

## APPROVALS



## SAFETY FEATURES

<b>Motor Thermal Protection</b>	Turns unit off at 135°C
<b>Heater Thermal Protection</b>	Turns unit off at 142°C
<b>Time Protection</b>	45s Auto Shut Off
<b>Cover Screws</b>	Vandal Resistant
<b>Protection</b>	IPX1

## SIZE AND WEIGHT

<b>Width</b>	250mm
<b>Height</b>	175mm
<b>Depth</b>	152mm
<b>Weight</b>	3.0kg

**Energy Efficient**  
Low Running Costs  
500 Watts Economy  
1150 Watts Maximum

**High Performance**  
Dries Hands in 15  
Seconds  
2 Year Warranty

**UV Light to Reduce  
Bacteria build up**

**Energy Saving Feature**  
The heating element  
can be turned off in the  
Puma, via a switch under  
the cover, which reduces  
the power usage from  
1150W to 500W

Note: All calculations assume a supply Voltage of 230V

