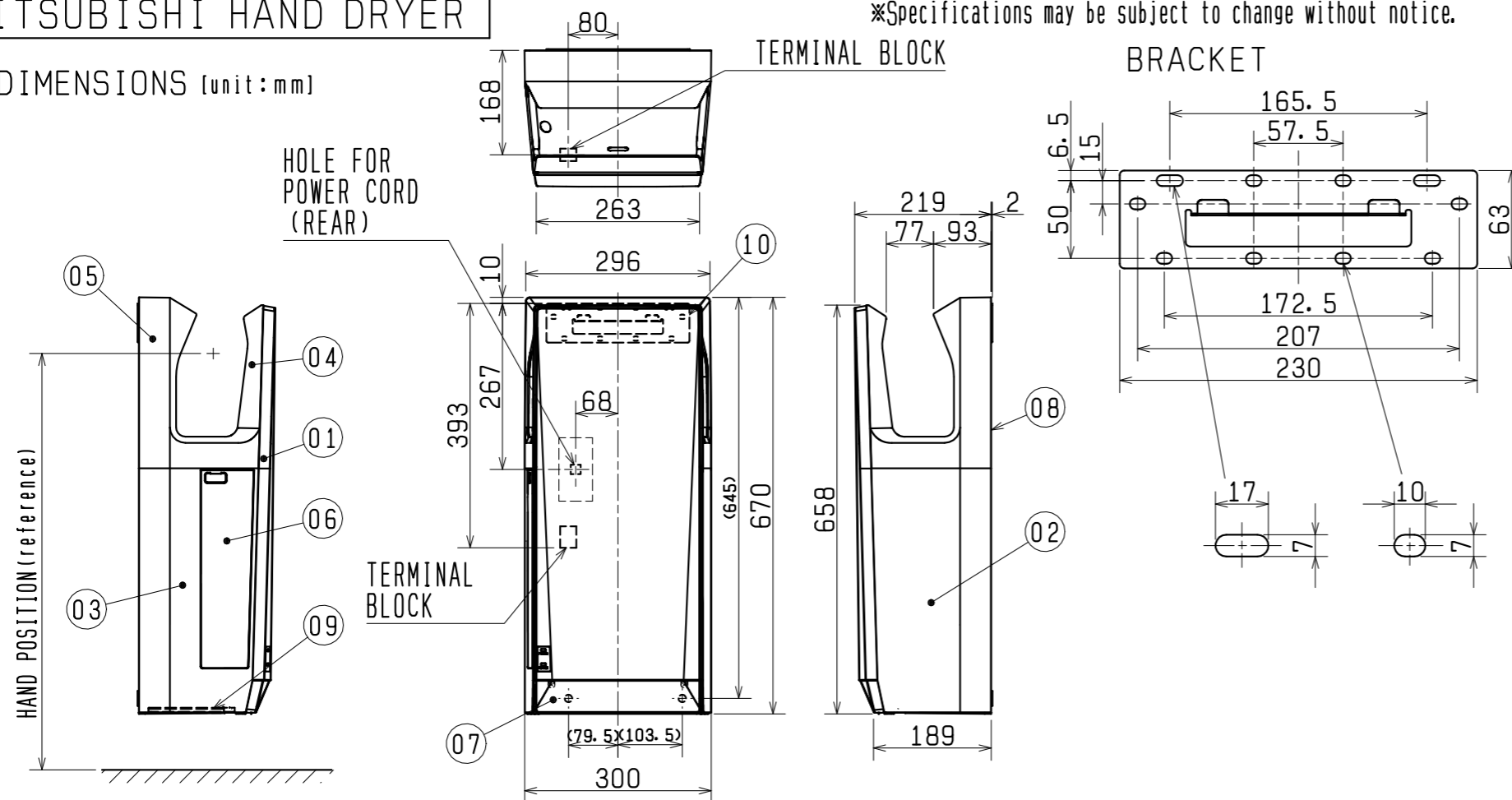


# MITSUBISHI HAND DRYER

\*Specifications may be subject to change without notice.

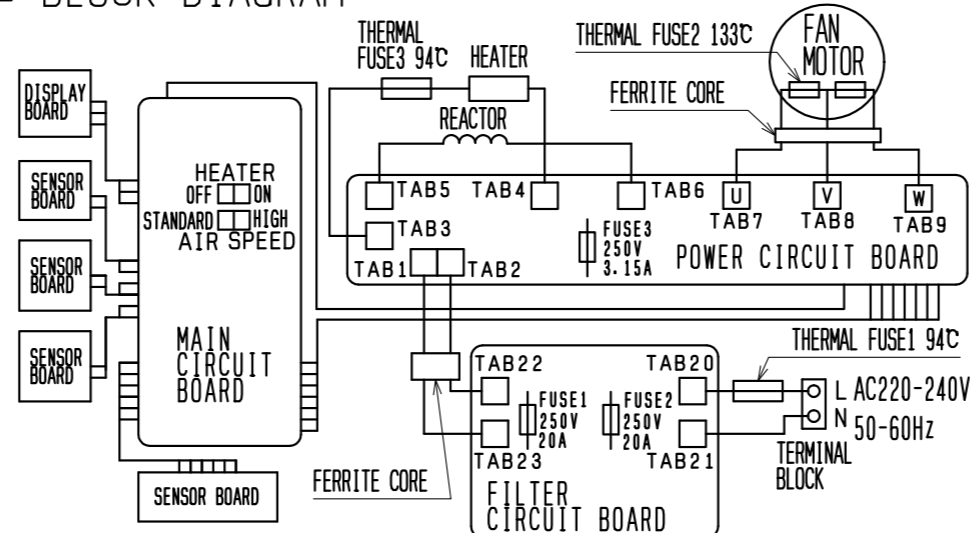
## ■ DIMENSIONS [unit:mm]



## ■ EXTERIOR MATERIALS

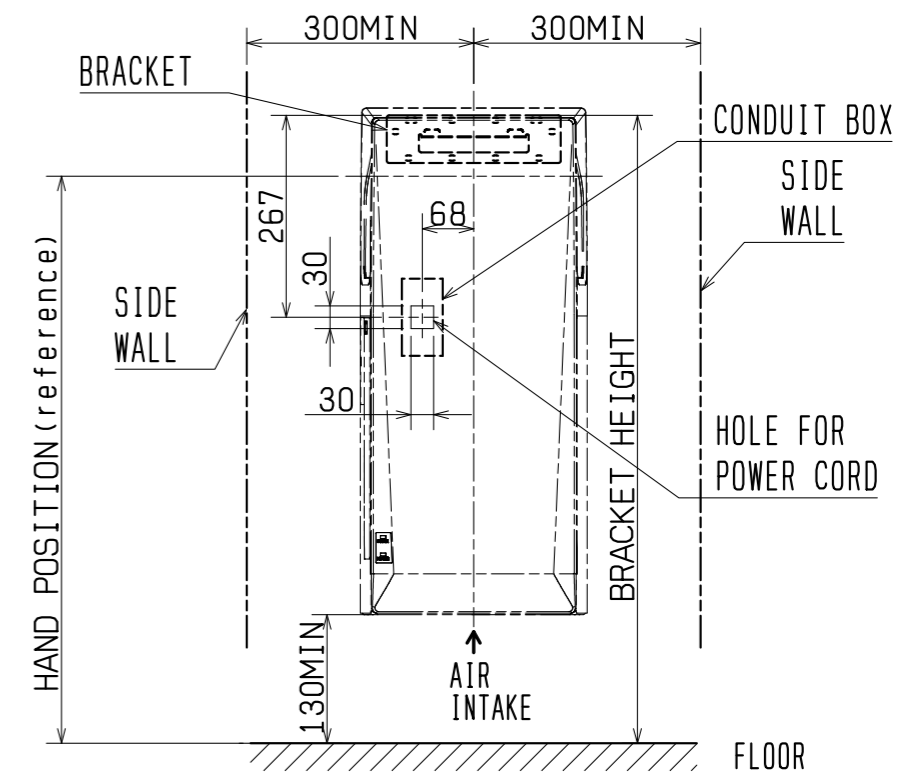
| No. | PARTS        | MATERIALS                            | COLOR (MUNSELL)  |   |        |
|-----|--------------|--------------------------------------|--|---|--------|
|     |              |                                      | -W   | -H  | -S     |
| 01  | FRONT PANEL  | ABS RESIN                            | WHITE<br>(7.1B: HUE<br>9.2: BRIGHTNESS<br>0.2: CHROMA) | DARK GRAY<br>(1.7PB: HUE<br>2 : BRIGHTNESS<br>0.38: CHROMA) | SILVER |
| 02  | SIDE PANEL-R | ABS RESIN                            |  |   |        |
| 03  | SIDE PANEL-L | ABS RESIN                            |  |   |        |
| 04  | PANEL-FRONT  | ABS RESIN                            |  |   |        |
| 05  | PANEL-BACK   | ABS RESIN                            |  |   |        |
| 06  | SIDE COVER   | ABS RESIN                            |  |   |        |
| 07  | DRAIN TANK   | ABS RESIN                            |  |   |        |
| 08  | BASE         | PP RESIN                             |  |   | BLACK  |
| 09  | AIR FILTER   | PP RESIN                             |  |   | BLACK  |
| 10  | BRACKET      | STAINLESS STEEL<br>(1.2mm THICKNESS) |  |   |        |

## ■ BLOCK DIAGRAM



## ■ INSTALLATION

- Read the installation manual thoroughly before beginning installation to ensure the appliance is installed safely and correctly. Local installation standards should be obeyed and installation should be performed by the dealer or a qualified professional.
- Be sure to install a ground-fault circuit interrupter. A means for disconnection must be incorporated in the fixed wiring in accordance with the wiring rules. Use wires in compliance with the wiring rules within a range of 1.0mm<sup>2</sup> or over and less than 2.5mm<sup>2</sup>.
- Do not install in the following types of location.
  - Outdoors
  - Where the temperature could be lower than 0°C or higher than 40°C.
  - Where the humidity could be lower than 5%RH or higher than 95%RH.
  - Where there is a lot of dust or condensation.
  - Where salt damage could occur.
  - Vehicles (incl. ships, trains, airplanes)
  - Where there corrosive, neutral, or reductive gases are present.
  - Where there are food, tableware, etc nearby because water may splash.
  - Where the appliance may come into direct contact with water.
  - Where the appliance is direct sunlight or strong light. (May cause the sensors to malfunction)
  - Rooms that have a sterilization basin, swimming pools, bathrooms.



## ■ SPECIFICATIONS

| MODEL               | RATED VOLTAGE (V)       | RATED FREQUENCY (Hz) | HEATER                  | MOTOR SPEED | RATED CURRENT (A)     | POWER CONSUMPTION (W) | AIR SPEED (m/s) | NOISE (dB)                               | WEIGHT (kg) | DRAIN TANK CAPACITY (L) |
|---------------------|-------------------------|----------------------|-------------------------|-------------|-----------------------|-----------------------|-----------------|--|-------------|-------------------------|
| JT-SB216JSH2-W-NE   | 220-240<br>SINGLE-PHASE | 50-60                | ON                      | HIGH        | 5.7-6.2               | 1240                  | 106             | 59                                       | 11          | 0.8                     |
| JT-SB216JSH2-H-NE   |                         |                      |                         | STANDARD    | 4.9-5.3               | 1070                  | 98              | 56                                       |             |                         |
| JT-SB216JSH2-S-NE   |                         |                      | OFF                     | HIGH        | 3.9-4.2               | 720                   | 106             | 59                                       |             |                         |
|                     |                         |                      |                         | STANDARD    | 3.0-3.2               | 550                   | 98              | 56                                       |             |                         |
| MOTOR TYPE          |                         |                      | BRUSHLESS MOTOR (4POLE) |             | SAFETY MEASURES       |                       |                 | THERMAL FUSE AND OVER CURRENT FUSE       |             |                         |
| DIELECTRIC STRENGTH |                         |                      | A.C. 3000V FOR 1MINUTE  |             | INSULATION RESISTANCE |                       |                 | 10MΩ OR MORE (MEASURED BY DC500V MEGGER) |             |                         |

- Air speed is calculated from the static pressure measured by the pitot tube. (at the nozzle)
- Noise is the A range value measured in an anechoic room. (Average as 3 points, 2m from the front and both sides)
- The heater is turned off automatically when ambient temperature is 30°C or more.
- Compliance : LVD, EMC Directive, ErP Directive (COMMISSION REGULATION(EC) No.1275/2008), RoHS Directive.



## RECOMMENDATIONS

|          | HAND POSITION | BRACKET HEIGHT |
|----------|---------------|----------------|
| MEN      | 810           | 925            |
| WOMEN    | 790           | 905            |
| DISABLED | 740 to 800    | 865 to 915     |

\* FOLLOW LOCAL GUIDELINES

| APPROVED  | DRAWN     |
|-----------|-----------|
| M. Fukano | K. Sawabe |



|                      |                                 |
|----------------------|---------------------------------|
| SCALE : NTS          | PRODUCT : MITSUBISHI HAND DRYER |
| UNIT : mm            | MODEL : JT-SB216JSH2-W/H/S-NE   |
| DATE : AUG. 24. 2015 | DWG. No. : NL115002             |