



INTELLIGENT FACILITY SOLUTIONS

Electric Works, 3 Concourse Way, Sheffield, S1 2BJ

United Kingdom: +44 (0) 114 354 0047

Eire: +353 190 36387

sales@ihdryers.co.uk

www.intelligenthanddryers.com



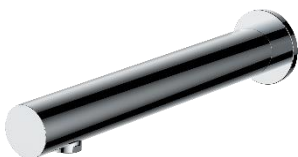
TRI-TAP WASH AND DRY SERIES

WALL MOUNTED

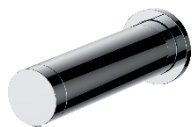
Hand dryer + Water tap + Soap dispenser



Sensor hand dryer: IFSM093A-ANON
Polished finish



Sensor faucet: IFSGA003AC-ANON
Polished finish



Sensor soap dispenser: IFSDJ003AC-ANON
Polished finish



Full set code: IFSUCM093A-ANON

General description

- Wash and dry unit Dryflow® Tri-Tap, consisting of a hand dryer + a water tap + a soap dispenser, all sensor operated and ready to be wall mounted.
- Ready to work together as a complete set, or component by component, Dryflow® Tri-Tap wash and dry has been thought and designed to avoid water splashing on the floor, to save space and to spend less time inside the washroom.
- Dryflow® Tri-Tap wash and dry wall mounted option is ideal for new construction projects of public restrooms which allow for the working components to be boxed in or for stud walls. In both cases, all components of this wash and dry unit are just behind the wall with only the taps in sight, creating a new clutter-free washroom experience.
- Dryflow® Tri-Tap wash and dry solutions are eco-friendly, saving more than 73% in terms of economical savings vs. similar solutions on the market.
- Dryflow® Tri-Tap wash and dry solutions are also very hygienic because they incorporate optionally a HEPA media filter, "Ion Hygienic" technology and an air-freshener tablet.

Components and materials

- **SENSOR OPERATED HAND DRYER (IFSM093A-ANON):** based on one of our most successful hand dryers, the Dryflow® G-Force MKII, this wall-mounted hand dryer is capable of drying hands in just 15 seconds thanks to a pleasant jet of air that can reach speeds of 400 Km/h. The tap is made of stainless steel AISI 304, with a polished finish.
- **SENSOR OPERATED FAUCET (IFSGA003AC-ANON):** wall-mounted and water-saving solution for a rational and intelligent use of water made of chrome-plated brass, with a polished finish.
- **SENSOR OPERATED SOAP DISPENSER (IFSDJ003AC-ANON):** made of chrome-plated brass, with a polished finish and an adjustable soap application between 0.5 ml and 2 ml.

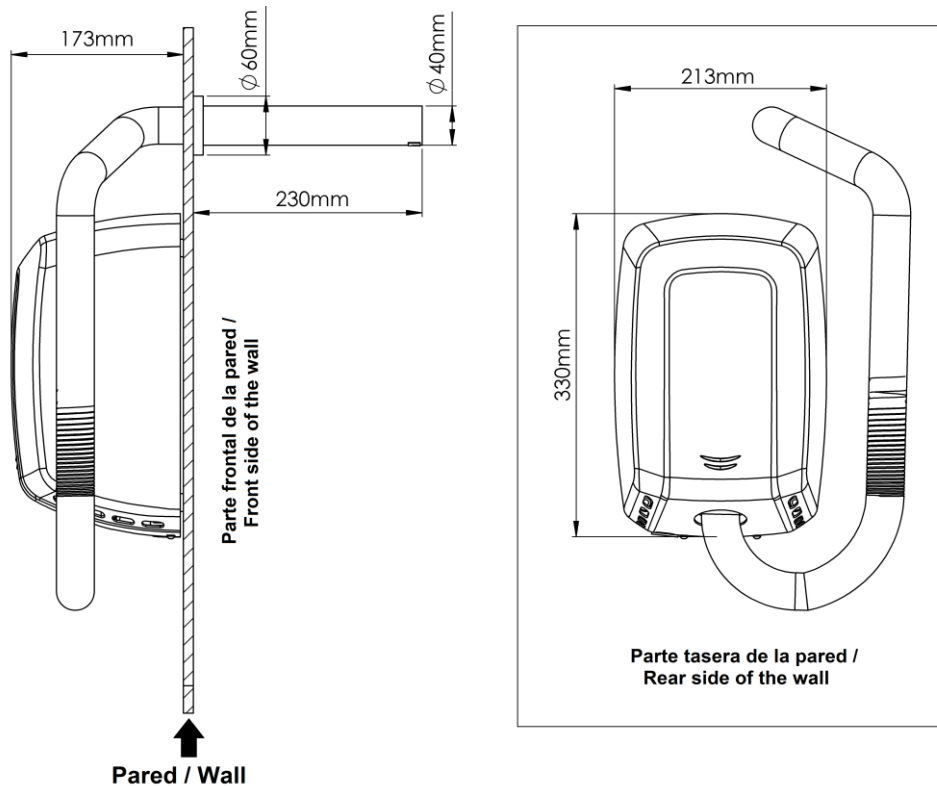
Sensor hand dryer (IFSM093A-ANON)

- Designed to work alongside the sensor operated faucet IFSGA003AC-ANON and the sensor operated soap dispenser IFSDJ003AC-ANON, as well as on its own, this wall-mounted hand dryer makes hand drying easier and faster to the user.
- Dryflow® G-Force MKII is the heart of Dryflow® Tri-Tap wash and dry solutions, providing a warm and powerful jet of air and offering a great user experience with fast and efficient drying times of up to 15 seconds.
- Furthermore, its touch-free wall-mounted system makes all wastewater go into the sink and not onto the floor, keeping a more hygienic and clean washroom and at the same time avoiding slips, a common cause of accidents.

Technical specifications

Voltage	220- 240 V	Cover thickness	1.5 mm
Frequency	50/60 Hz	Drying time	10-15"
Electrical Isolation	Class I	Effective airflow	50-105 m ³ /h (835 -1,755 L/min)
Total power	420 – 1,500 W	Air velocity	190 – 400 Km/h
Consumption	3.2 –6.4 A	Air temperature (10 cm distance/22°C)	42 °C
Standby consumption	0.3 W	Sound pressure ^(*) (at 2m)	67-72 dBA
Motor power	420 – 1,100 W	Protection rating	IP23
Rpm	19,000 – 30,000	HEPA filter media	Optional
Heating element power	400 W ("ON/OFF" switch)	Plug-in system	Optional
Security cut-off	60"	Ionizer ("Ion Hygienic")	Optional
Dimensions	330x213x170 mm	Air-freshener tablet	Optional

Dimensions



Dimensions: ± 4%

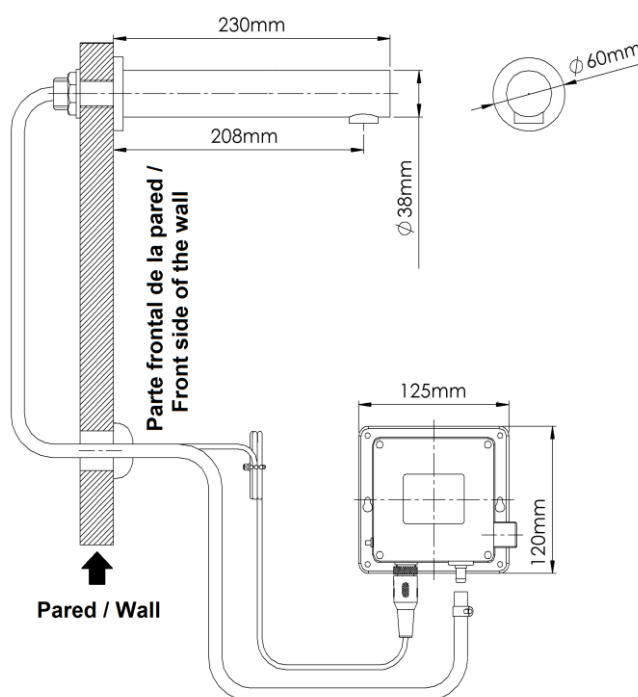
Sensor faucet (IFSGA003AC-ANON)

- This touch-free faucet is made of chrome-brass, with a polished finish, from the highest quality materials.
- Active infrared sensing for an hygienic touch-free operation that also helps to optimise the flow rate water and thereby supporting long-term ecological balance.
- Effective sensor range detection of 5-25 cm.

Technical specifications

Power supply (adaptor)	220-240V – 50/60Hz
Water pressure work range	1 – 3 bars
Water flow (at 3 bar)	5.0 L/min
Battery life (4xAA)	108,000 cycles
Sensor range	5-25 cm
Security cut-off	60"

Dimensions



Dimensions: ± 4%

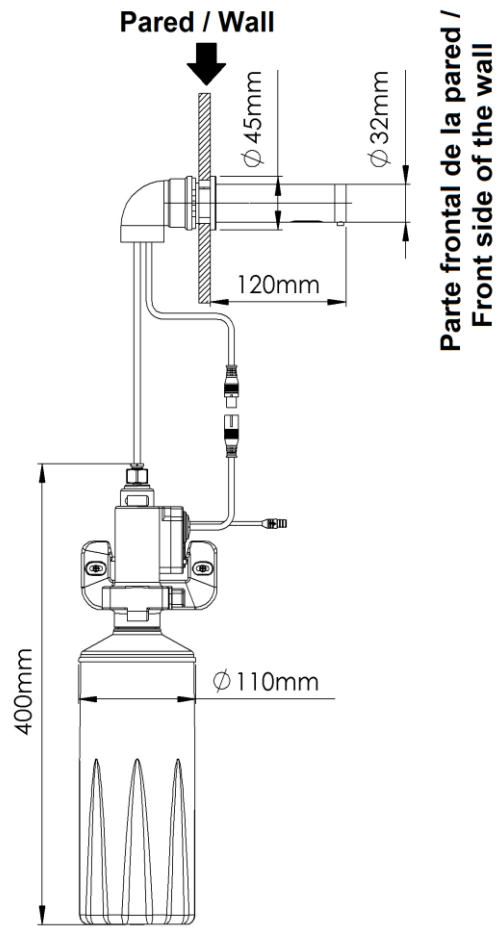
Sensor soap dispenser (IFSDJ003AC-ANON)

- Automatic wall mounted soap dispenser made of chrome-brass, with a polished finish
- The soap is contained in a plastic bottle of a 1.5L capacity, easy to be removed for refilling, and the soap is dosed by a high resistance anti-drip valve.
- The soap dose can be adjustable between 0.5 ml and 2 ml, in doses of 0.5, 1.0, 1.5 or 2.0 ml, to reduce soap waste

Technical specifications

Power supply (adaptor)	220-240V – 50/60Hz
Battery life	60,000 cycles
Sensor range	5-25 cm
Recommended soap viscosity	100 – 3,500 cps
Soap dose	0.5, 1.0, 1.5 or 2.0 ml

Dimensions



Dimensions: $\pm 4\%$